

VCL-STM-1 (upto 28 E1)

Product Overview

The VCL100LT is an ultra-compact and cost-effective customer premises bandwidth provisioning equipment designed to meet low or medium capacity bandwidth service demands.

This unique product is part of a family of STM-1/4 Multi-Service Provisioning and Access Nodes. The VCL100LT supports end-to-end provisioning and management of voice and data services across all the segments of the optical network - from the customer premises to the core. It combines innovative optical networking software with the intelligence of SDH to deliver a flexible solution to today's service providers.

The VCL100LT can be configured as a Terminal Multiplexer (TMUX) or an Add-Drop Multiplexer (ADM), with E1, E3 or 10 Mbps Ethernet service interfaces and trunk interfaces at STM-1 rate. The product has a built in non-blocking cross-connect at VC-3 and VC-12 granularity for efficient traffic grooming.

In view of the growing demand of packet services VCL100LT provides an Ethernet tributary interface to carry inter-office traffic from corporate LANs, campus networks or from ISPs.



Features

- Low priced Terminal Multiplexer and Add-Drop Multiplexer
- Seamless integration with the VCL100 family of equipment and management
- 1U chassis- available in rack and wall mounting options
- Integrated and multi-service delivery
- Linear and ring topologies Multi-level protection schemes- Unprotected, MSP, SNCP
- Advanced networking software with support for open standards such as GMPLS and OSPF



10842, N 127th Place, Scottsdale, AZ 85259, U.S.A.

Phone: +1 480-816-8672 **Fax:** +1 480-451-6693

Website: www.ariestelecom.com **E-mail:** info@ariestelecom.com

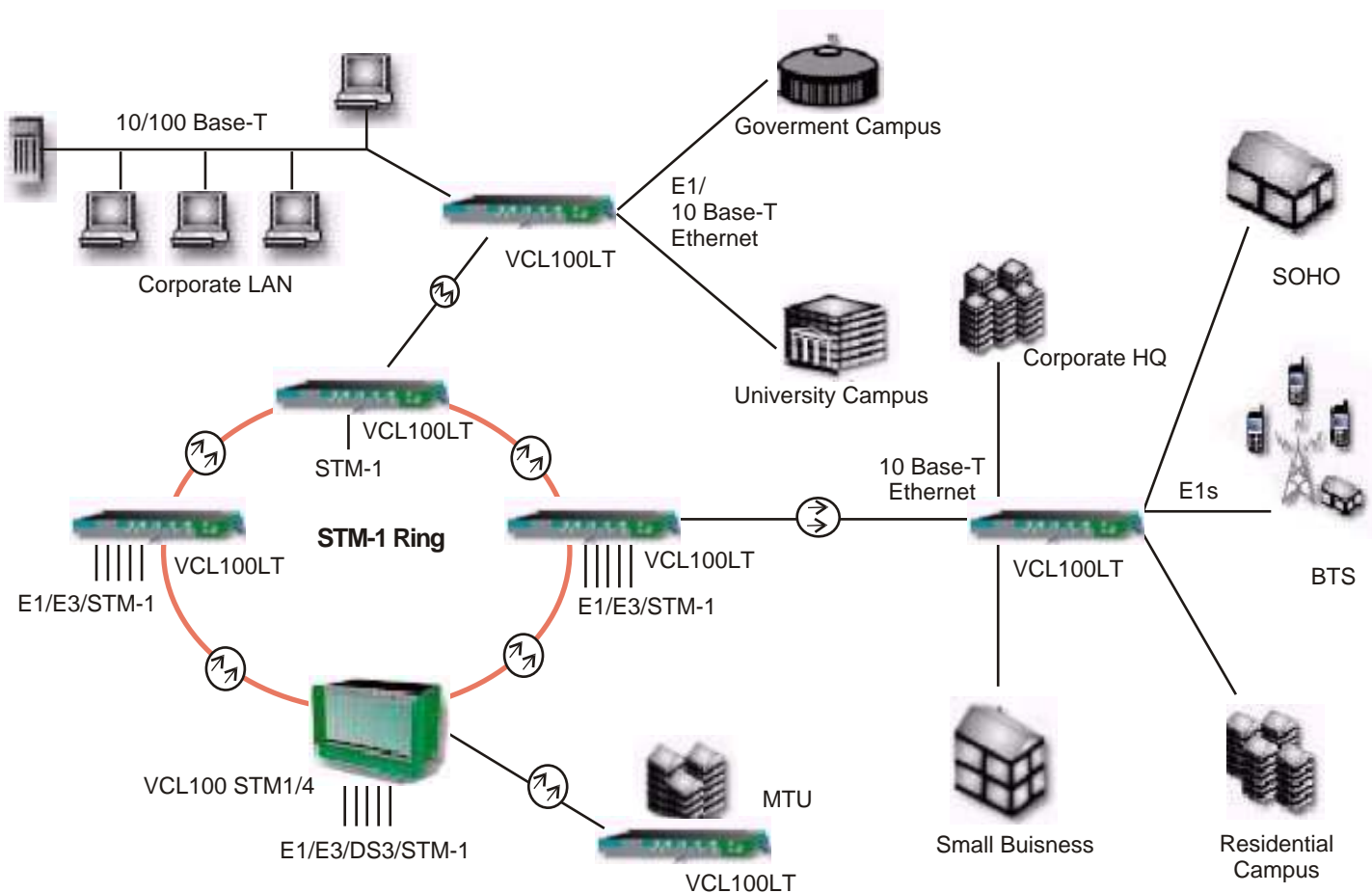
Advantages

- Can be placed in customer premises or access nodes
- Allows growth of network with more choices from a common family of products and with a single type of element management system
- Compact size
- Provision both voice and data services from the same platform. Efficient use of transport bandwidth by supporting per-port rate adaptive Ethernet services
- Topology support to cater to customer network scenarios. Carrier-grade protection schemes enable you to cater to differing customer protection requirements
- Enables automatic topology discovery, shared mesh restoration and Point-and-Click-Provisioning (PNCP). User friendly GUI based Network Element Software for local and remote provisioning

Benefits

- A practical and cost-effective solution catering to low volume traffic requirements
- Easy and cost effective option to grow to a larger network with minimum increase in overhead costs
- Better utilization of available rack space and easy installation in customer premises
- Future proof architecture protecting investment
- Flexible and cost-effective network solutions.
- Creation of differentiated services to enhance the portfolio of service offerings
- Reduction in operational costs and increase in efficiency through lower provisioning time and operator intervention

Applications



Technical Specifications

Network Topology

- Linear, Ring, Mesh

Network Element Configurations

- Terminal Multiplexer (TMUX)
- Add-Drop Multiplexer (ADM)

Aggregate Interfaces

- 2 X STM-1 e/o
- Optical - S1.1, L1.1, L1.2 (ITU-T G.957 compliant)

Tributary Interfaces

- E1 / DS1, E3 / DS3
- STM-1o
- STM-1e/E4
- 10 Base-T Ethernet

Cross Connect

- 252 X 252 VC-12
- Fully non blocking
- Line to Line, Line to Tributary, Tributary to Line, Tributary to Tributary

Maintenance

- Higher-order and Lower-order POH, all SDH level performance monitoring (as per ITU-T G.826 & ITU-T G.784)
- Software downloads

Network Management

- Element Management System: NES (Network Element Software), supports full FCAPS functionality.
- RS-232 port for craft interface
- In-band control supported using SONET/SDH Overhead bytes
- E1 management channel support with drop facility
- Alarm Signaling Indicators and External Contacts

Power Supply

- -48V DC nominal, -36V to -60V DC
- Power consumption – less than 35W

Timing & Synchronization

- Timing & Synchronization of System (as per ITU-T G. 813)
- Internal and External Timing interfaces – Two E1 BITS interfaces (as per ITU-T G.703)

- Internal oscillator capable of supplying a ITU-T G.813 compliant Stratum-3 SEC

- Support of SSM byte

Order wire support, Alarms and User data Channel

- E1/E2 bytes used for Express order wire (Omnibus / Selective calling facilities)
- F1 byte for user data channel
- Five potential-free outputs and two potential-free inputs

Physical Dimensions

- Dimensions (H X W X D): 44 mm x 435 mm x 290 mm (1.75 in x 17.4 in x 11.4 in)

Environmental

- Operating Temperature: 0° to 50°C
- Relative Humidity: 10% to 90%, non condensing

Technical specification are subject to change without notice.

All brand names and trademarks are the property of their respective owners.

10842, N 127th Place
Scottsdale, AZ 85259, U.S.A.

Website: www.ariestelecom.com

E-mail: info@ariestelecom.com